

YOU WILL NEVER FIND ANOTHER BOAT LIKE MAINE'S TIMELESS

FRIENDSHIP SLOOP

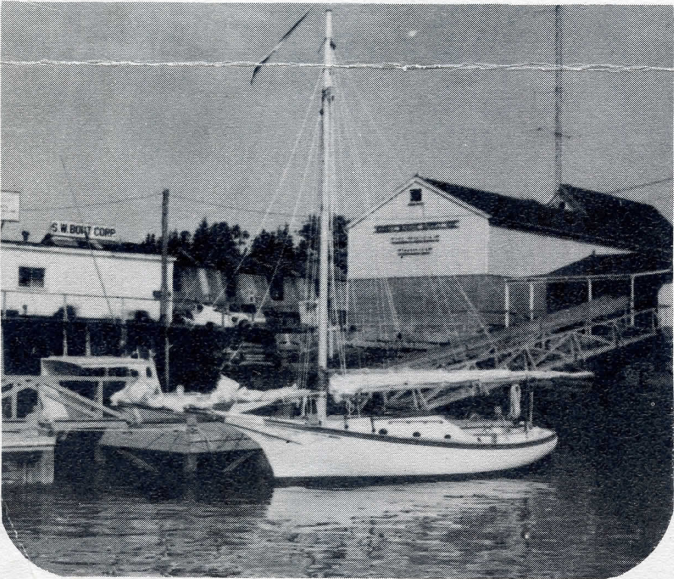
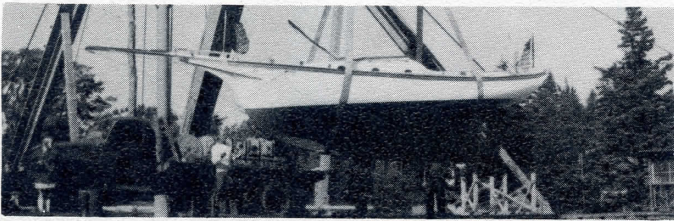
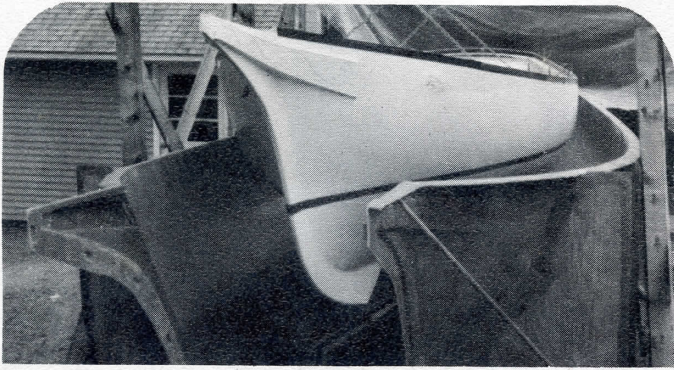
crafted in fiberglass

by JARVIS NEWMAN

SOUTHWEST HARBOR, MAINE 04679
207-244-3860

SAILING IS NOT A

WHEN YOU STEP ABOARD



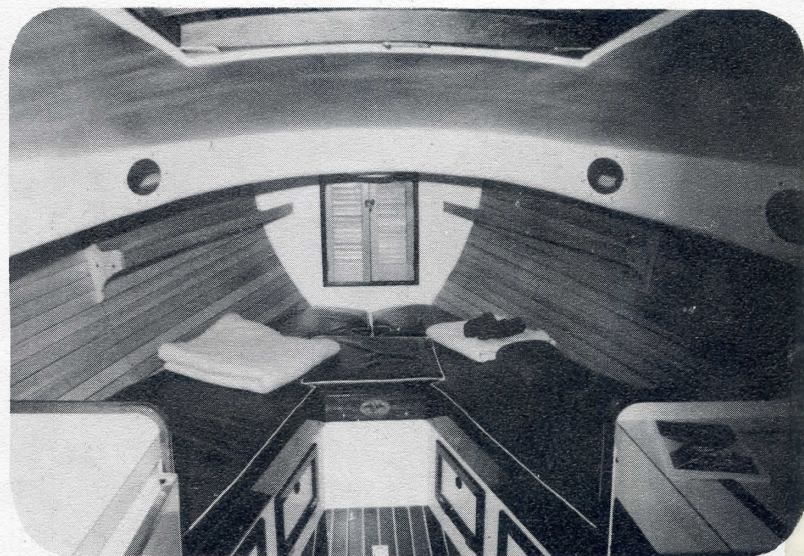
cabin looking forward

What a man needs in his boat is a good line, balance and symmetry, together with the quality of materials and careful craftsmanship to make her seaworthy and responsive.

This beautiful craft emerges from the form with that additional quality of elegance already implicit in her polished fiberglass hull. Soon your sloop is ready at the dock, poised and waiting for your first command.

You will appreciate her spacious quarters, with four 7' berths, head galley, lockers, and water tank. Polished pine paneling and a cabin sole of laminated teak and holly give her a warm and comfortable look.

The sliding hatch makes full headroom possible over the work area, and there is five foot clearance with the hatch closed. But she still retains the same low classic profile.



SPECTATOR SPORT

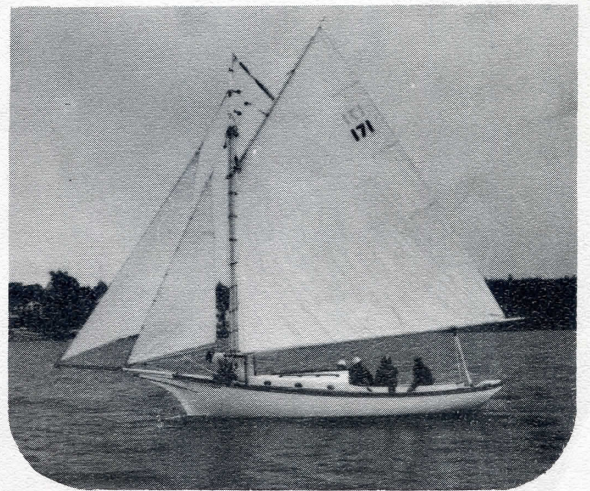
A FRIENDSHIP SLOOP

This timeless FRIENDSHIP SLOOP will come alive for you when you take her out for her first sail.

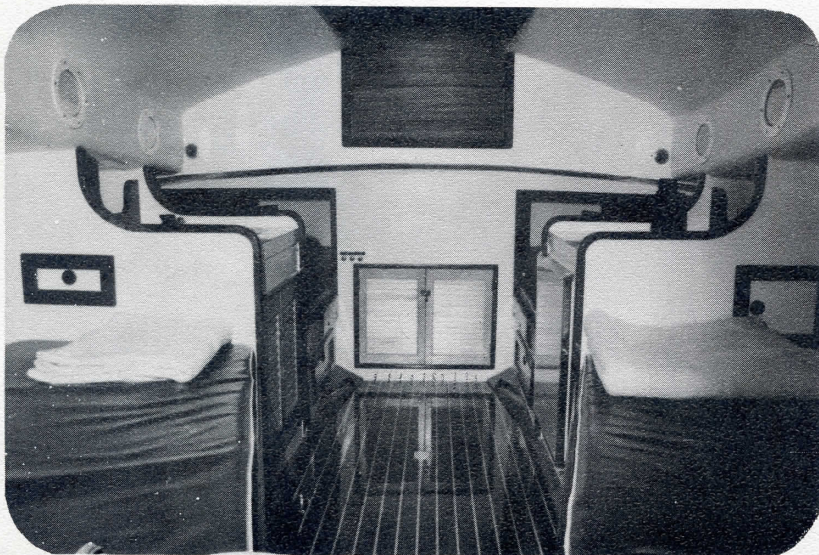
From her graceful clipper bow with its bronze figure-head and twin jibs to the massive mainsail on a sturdy gaff rig, this rugged sloop is poetry in motion. No one has matched her graceful sheer, nor duplicated the thrill of steering her through her paces.

You will cruise in comfort and safety, and experience a never-failing pride in this unique design which sails as well as she looks—perfected by generations of Maine's master boat builders.

This is a vessel with a "welcome aboard" look, the appointments for deep water cruises, and the ease of maintenance for the busy weekender.



cabin looking aft



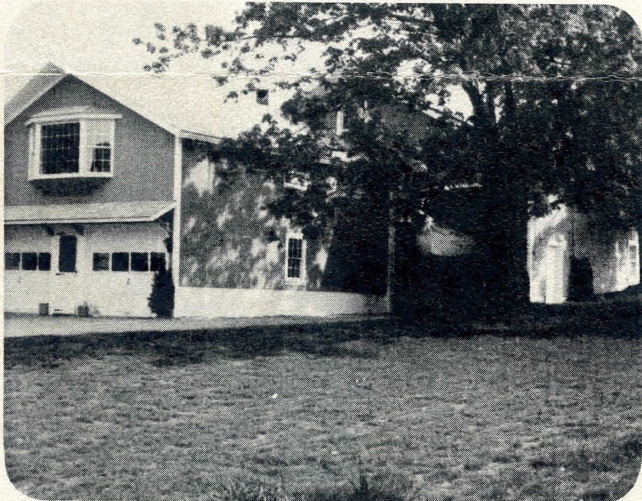
Authentic PEMAQUID
Reproduction

This fiberglass FRIENDSHIP SLOOP is a faithful replica of the original "Pemaquid," designed and built by Abdon Carter in 1914 in Bremen, Maine. The Pemaquid has long been recognized by such authorities as Howard Chapelle of the Smithsonian Institution as the ultimate in the evolving design work done on the FRIENDSHIP SLOOP style. The design is noted for its combined speed and enormous stability, qualities needed in its original days as a traditional Maine work boat, and equally valuable for today's sailor.

"Old Baldy" by Camden's Bald Mountain Boat Works served as "plug" for the mold used to make this fiberglass sloop.

SPECIFICATIONS

LOA	25 ft.
LWL	21 ft.
BEAM	8' 8"
DRAFT	4' 3"
SA	432 sq. ft.
KEEL	2,000 lb. lead
DISPL	7,000 lb.



Shop interior with FRIENDSHIP SLOOPS and Cranberry Isle dinghies under construction.

PRINCIPAL CONSTRUCTION
CHARACTERISTICS

Hull and Deck Construction: One piece molded fiberglass, 1/2 to 2" thick in a highly supervised sequence of slow curing for maximum strength.

Keel: One piece molded lead of 2,000 lbs. and secured outside with 3/4 inch "everdur" bolts and bonded to rigging and engine.

Engine: 15 hp Volvo diesel, 2 cylinder, water cooled.

Exterior Woodwork: Teak, secured with stainless steel fastenings.

Spars: Native spruce 7" in diameter, carefully seasoned to control checking, varnished and painted.

Standing Rigging: All stainless steel with bronze hardware. Includes deadeyes for traditional authenticity. Many fittings hand made to unique specifications of FRIENDSHIP SLOOP.

Running rigging is dacron through lignum vitae blocks and bronze sheaves.

NEWMAN BOAT SHOP on the Manset shore of Southwest Harbor, Maine

