

# ECHO

Make: Friendship Sloop, Friendship Sloop Society Registration #54

Asking: \$19,500. Lying: Wickford, RI.

George Hagerty Mobile: 781-856-2635

Built in 1965 by master builder Merrill Young, at Øisten Lie-Nielsen's *Lee's Boat Shop*, Rockland, ME. Cedar on oak with spruce spars, bronze fittings, and traditional deadeyes. Baldheaded gaff rig w/two headsails: 1 self-tending club-footed stays'l and 1 "Yankee" jib.

L.O.D.:	22'	Draft:	4'	Mast height:	23'
L.O.A.:	33'	Displacement:	5,200lbs	Boom length:	20'
Beam:	8'	External Ballast:	1,800lbs	Sail Area:	326 SF

ECHO was commissioned by William Thon, Maine's most famous watercolorist after Andrew Wyeth. Among his numerous awards are First Prize from the Brooklyn Museum in 1941 and 1944, distinctions from The National Academy of Design, Gold Medals from the American Watercolor Society in 1970 and 1978, State of Maine Award and Citation from Governor Kenneth Curtis in 1970, and a Silver Medal from The Audubon Society in 1986. Mr. Thon's paintings are represented in many public and private collections including The Metropolitan Museum of Art, The Brooklyn Museum, The Hirschhorn Museum, The High Museum, The Whitney Museum, The Butler Art Institute and The Columbus Museum of Art. Shortly after the attack on Pearl Harbor at age 35 and knowing his way around boats, he volunteered for the Coast Guard finally enlisting in the U.S. Navy where he was sent to New London, Connecticut for "submarine school" becoming a soundman operating sound gear on anti-submarine vessels. Perhaps this is the reason for later christening his own Friendship Sloop "ECHO" from his sonar days.

Mr. Thon relocated to Port Clyde, ME in the 1940's where he spent the rest of his life with his wife Helen. Throughout his career he painted countless marine scenes along his beloved Maine coast; many of small craft, gaff-rigged sloops and especially Friendship sloops. His individual hand-painted Christmas Cards were much sought after and can still occasionally be found at estate auctions. Might we speculate that Wyeth sailed on ECHO at some point, since the two artists were neighbors in Port Clyde and Wyeth had a stated high regard for Thon's work. We'll never know for sure...

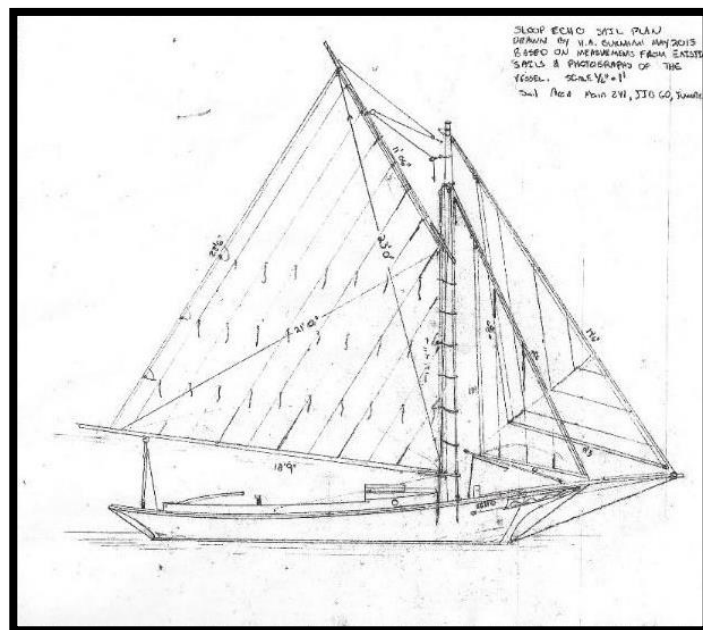
ECHO's birthplace at Lee's Boatshop in Rockland was owned by "Lee" Nielsen who was born in Oslo, Norway. In 1926, at the age of 18, Lie-Nielsen emigrated to America when the chance came to ride a freighter destined for the United States. By 1927 he was in Marblehead, Massachusetts teaching sailing. There he met his close friend and lifelong mentor, L. Francis Herreshoff for whom he later worked as an overseer for shops building a variety of LFH designs. As a much sought after captain, Nielsen skippered the famous 72' ketch TICONDEROGA (amongst others) to various cup wins during her heyday in the 1950s, moving to Maine with his wife Margaret in 1957.

Starting his own shop in the 1960's, Lee's Boat Shop of Rockland put out more than 27 yachts including the 90' ketch WHITEHAWK. In 1983 he completed Elizabeth II, an exact replica of Sir Walter Raleigh's original flagship, in Manteo, South Carolina. In 1991 at the age of 91, he returned to Manteo to supervise her refit!

ECHO was built to the lines of the classic *Pemaquid*\* Friendship Sloop fishing craft with large fish hold under short forward cuddy and she is a fine example of these simple working sloops originally developed for lobster and line fishing in Muscongus Bay from the 1880's onward. At some time, ECHO's cuddy was slightly enlarged and more recently two small berths have been added for a modicum of cruising comfort. Owned briefly in the 1990's by another artist, Tom McCobb of Connecticut, ECHO was also in the able care and steady hands of the Major family of VT and ME.

I am now the fourth owner (and third artist) to become caretaker of this beautiful vessel and I look forward to shepherding her into her second half century of sailing. To keep ECHO as close to her 19<sup>th</sup> C. heritage as possible, I commissioned a new suit of vertical-seamed sails in canvas color *Oceanus* cloth to be cut by Harold Burnham of Burnham Boat Building of the eponymous shipbuilding family dating back to the 1700s in Essex, MA. Harold had sailed against ECHO in the annual Friendship Sloop Regattas (held annually since 1961 in Maine) having grown up sailing on his father's Friendship MARIA and owning two Friendships himself.

The author apologizes in advance for any errors or omissions.



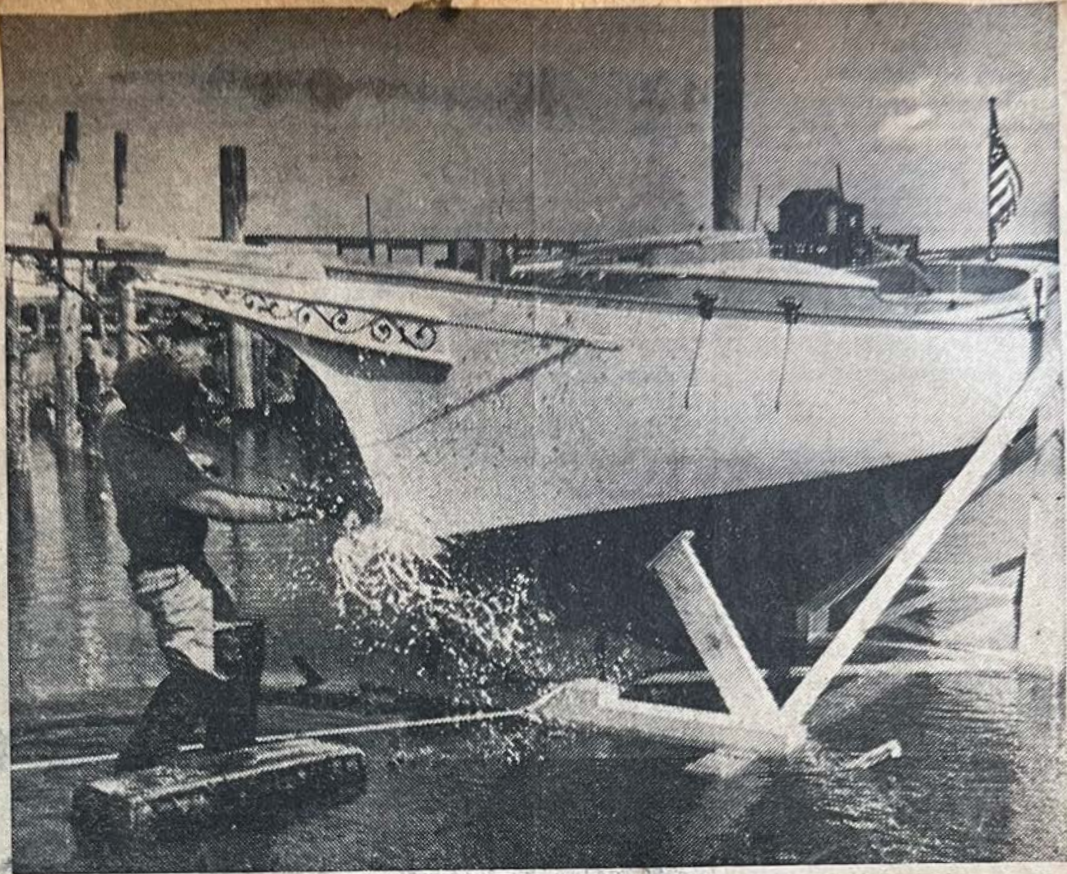
*Illustration: Sail Plan as drawn by Harold Burnham, May 2015.*

\*See: Howard Chapelle, *American Small Sailing Craft, Their Design, Development, and Construction*,

- I. Spars (Spruce)
  - A. Main mast (bright), Boom, Gaff, Stays'l Club, Whisker pole (all painted)
- II. Sails
  - A. New set (2015, Oceanus) – main, jib, staysail
  - B. Old set (Dacron) – main, jib, staysail
- III. Running rigging
  - A. Main, jib and staysail sheets, main and staysail outhaul, CDI roller furling jib, throat and peak halyards with associated wood blocks, lazy jacks (2), main reefing: 3 lines, mainsail ties, short and long. All lines NE Ropes classic 3-strand. Assorted spare wood and bronze blocks.
- IV. Dock lines
  - A. (4) – new NE Ropes 8-plait nylon with spliced loops
- V. Fixed rigging
  - A. Shrouds with deadeyes and lanyards, bobstays, whisker stays, jib and staysail stays.
  - B. Port and starboard light boards. Registration boards.
- VI. Ground tackle
  - A. Bruce plow & Danforth folding anchors w/two sets of nylon three strand rodes.
  - B. Folding Fisherman's anchor.
- VII. Manuals for all equipment, misc. paints, and varnishes (Interlux coatings list).
- VIII. Accommodation
  - A. 2 Interior berths w/cushions and Sunbrella zippered covers
  - B. 4 cushions (throwable PDF)
  - C. Thetford Portapotty
  - D. 2 Portholes - bronze w/screens, and dogs
  - E. Brass W/C gimballled lantern
  - F. Companionway ladder (bright)
  - G. Screened companionway board.
    - 1. Second (solid PVC) for storms
- IX. Canvas (Sunbrella, toast)
  - A. Custom Mainsail, Jib (when hanked on), Stays'l & tiller covers
- X. Fenders

## ECHO EQUIPMENT

- A. 3, Taylor-Made with lines attached
  - B. 1 large round bump fender for port/motor side
- XI. Teak Jacobs boarding ladder with NE Ropes natural 3-strand railings
- XII. Misc. mast items
- A. Davis Windex
  - B. Harken masthead block for antique Perko steaming light
  - C. Two 12V batteries (separately for house and bilge pumps), w/secured and covered battery boxes
- XIII. Pumps
- A. 1 Main and 2 backup RULE automatic bilge pumps, various GPH
  - B. Whale manual bilge pump w/handle
- XIV. Auxiliary Propulsion
- A. Yamaha 4F 5hp gas outboard w 5gal tank and hose
  - B. Torqeedo Cruise 2.0TL (6hp gas equivalent) outboard
    - 1. Torqeedo 26-104 24V battery
  - C. Two sweeps w/extended rowlocks
  - D. Custom stainless and aluminum hinged motor bracket (over port quarter)
- XV. Solar
- A. Two separate 6V Ganz semi-flexible solar panels for house and pump batteries
  - B. Three separate 12V Ganz semi-flexible solar panels for Torqeedo 26-104 battery w/Torqeedo solar controller.
  - C. Marincos Day/Night active solar vent fan for lazarette
- XVI. Safety
- A. Standard Horizon fixed VHF Radio w/mast mounted antenna
  - B. 2, ABC Fire Extinguishers and brackets
  - C. Sirius SOS USCG approved battery powered distress light
  - D. 4 USCG approved throwable PFD cushions
  - E. Ash & bronze boat hooks
- XVII. Winter Cover
- A. Canvas (treated, breathable)
    - 1. Sturdy and easily assembled/stored wood support system which can “butterfly” for springtime commissioning in the shade.



**HUBBY GIVES A HAND** — Mrs. William Thon just couldn't seem to break the champagne bottle on the bow of the Friendship Sloop Echo Saturday so her artist husband

did the honors. The craft was tide launched so Mrs. Thon had to stand on planking to reach the bow which made a strong swing precarious. Photo by Nevells

## Smallest Of New Sloops Launched

The trim little Friendship Sloop, Echo, owned by famous artist, William Thon, of Port Clyde was launched in a tide launching from Lee's Boat Shop near the Public Landing, Saturday afternoon. A number of the owner's friends were present at the affair. Mrs. Thon was scheduled to sponsor the craft but when the champagne bottle failed to break after several attempts, her husband took over and smashed it with a mighty swing.

The problem of christening the craft was just the beginning of getting her afloat. When the tide came in, the cradle failed

to stay down and floated with the boat.

Attempting to row the Echo out of her cradle failed to free the craft. Finally a line was fixed to a stake out in the harbor and Lie Nielsen gave a heave and out of the cradle she came.

Echo is 22 feet 4 inches long, seven feet six inch beam and draws three feet six inches. She has an oak frame, cedar planking fastened with Everdur. She has no inboard auxiliary power but will carry an outboard motor and oars for emergencies. She is not built for cruising but does have one double bunk. The little boat which will be one of

the smallest sloops of this model now in existence is a scaled down model of the 25 foot, Pemaquid; built in Bremen about 1914 by A. K. Carter.

Lee's Boat Shop is owned by O. Lie-Nielsen of Camden and Merrill Young is master builder.

1965















www.safesea.com 401-295-8711

Tow Boat U.S.

IN PRAT

Decorative scrollwork on the transom









1480W

ME 1480W

E











































HAGERTY

NOTICE  
ECCO  
BERG, GERMANY

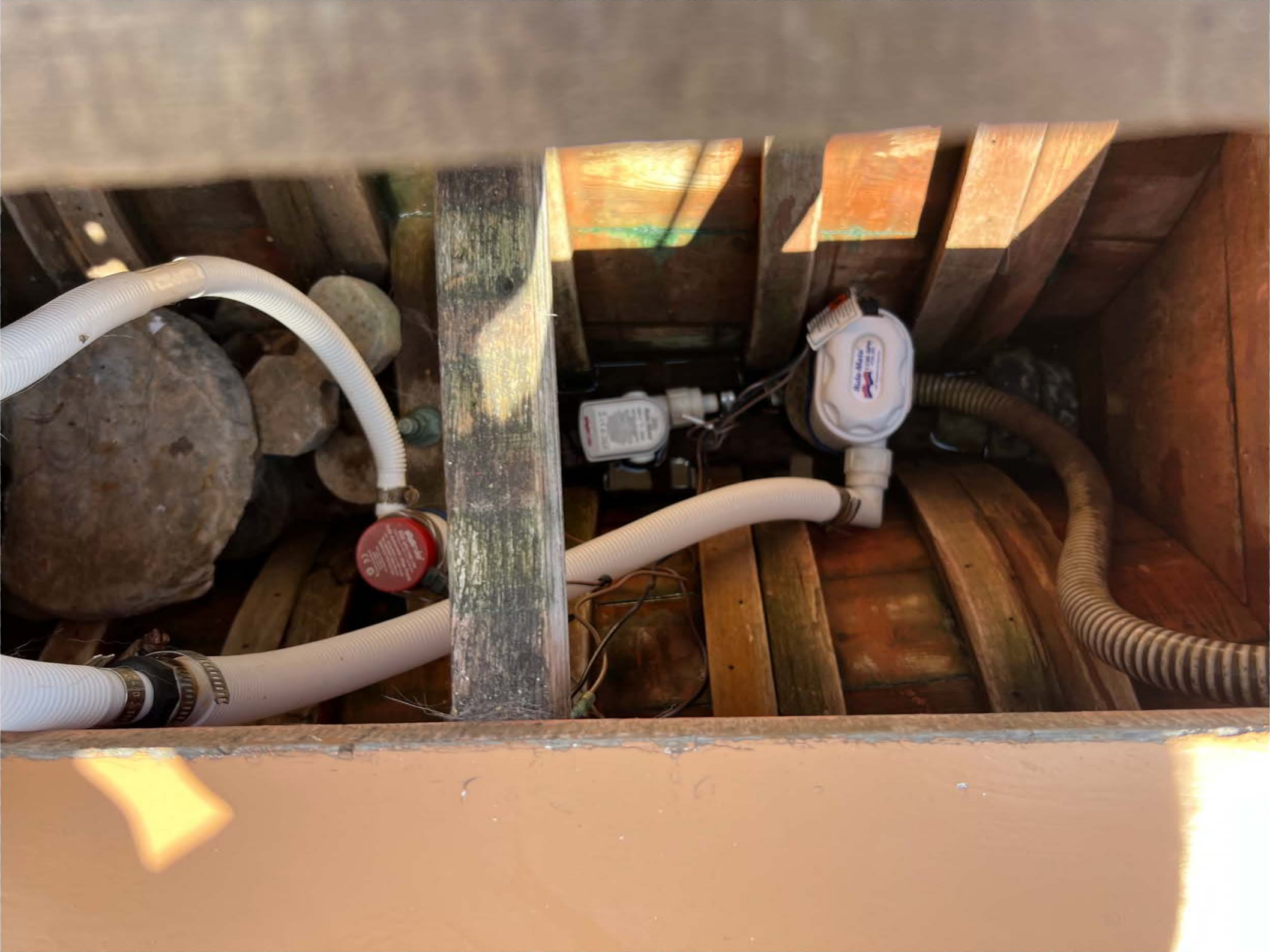
ECCO



BACK UP  
PUMP: 50062M

SCITEK  
VHF  
RADIO































**FOR SALE**  
761-856-2635